


## Voie d'avenir

### Etudes d'Avant Projet Phase 2 - Recherche de tracés Compléments

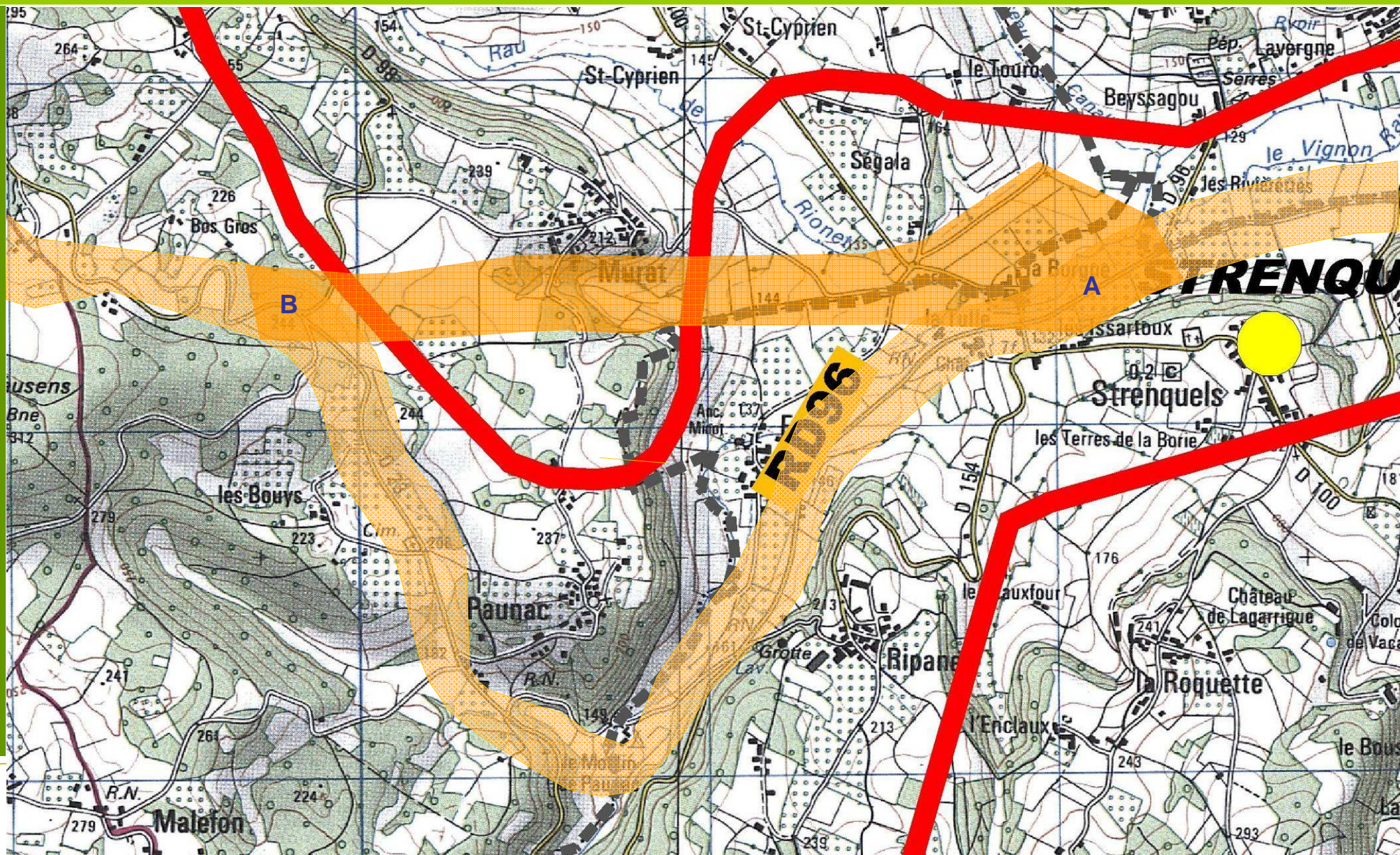
 egis route France



26 mars 2010



# TRACE T4b

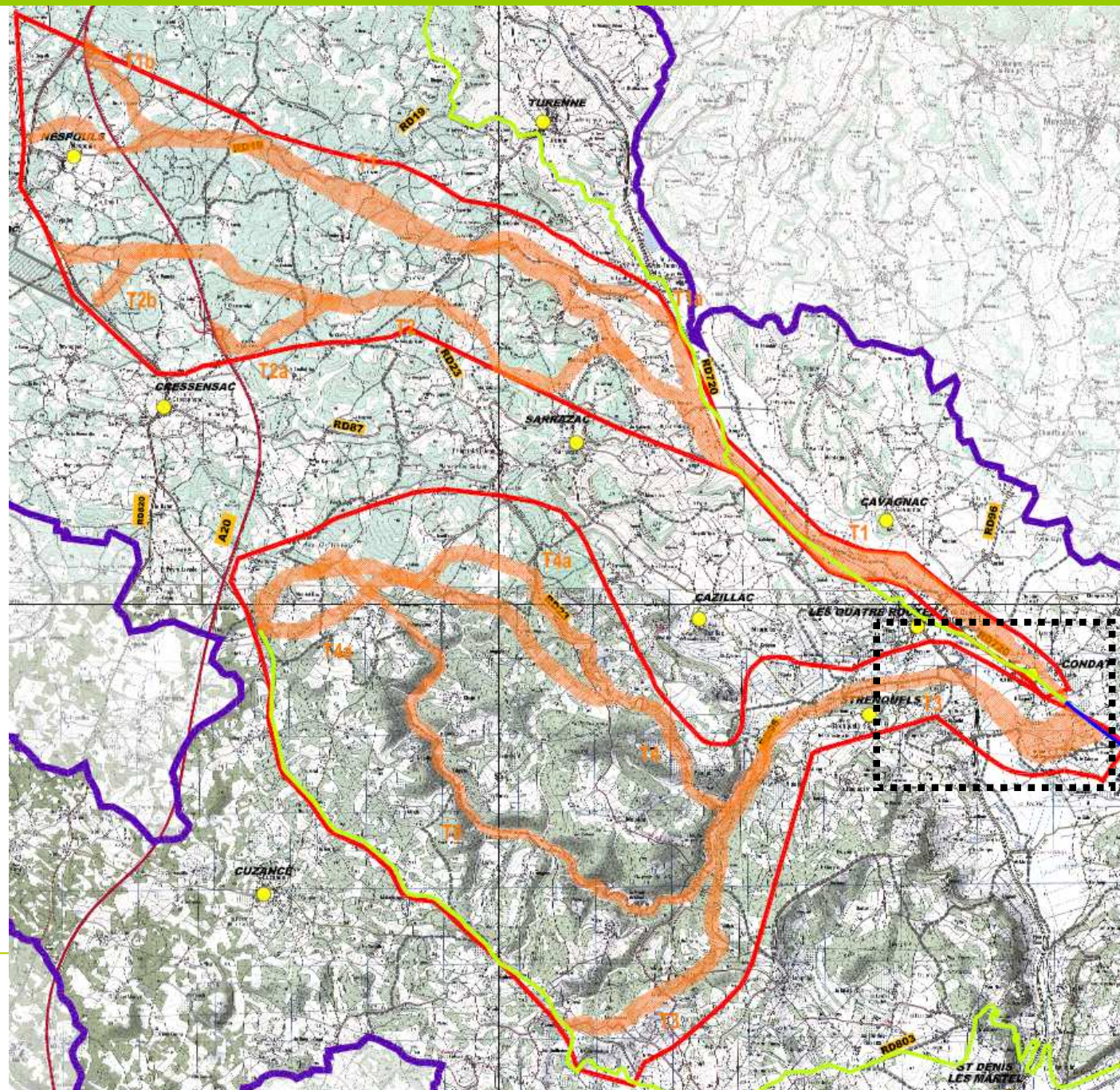


# TRACES PRESENTES LE 18 MARS

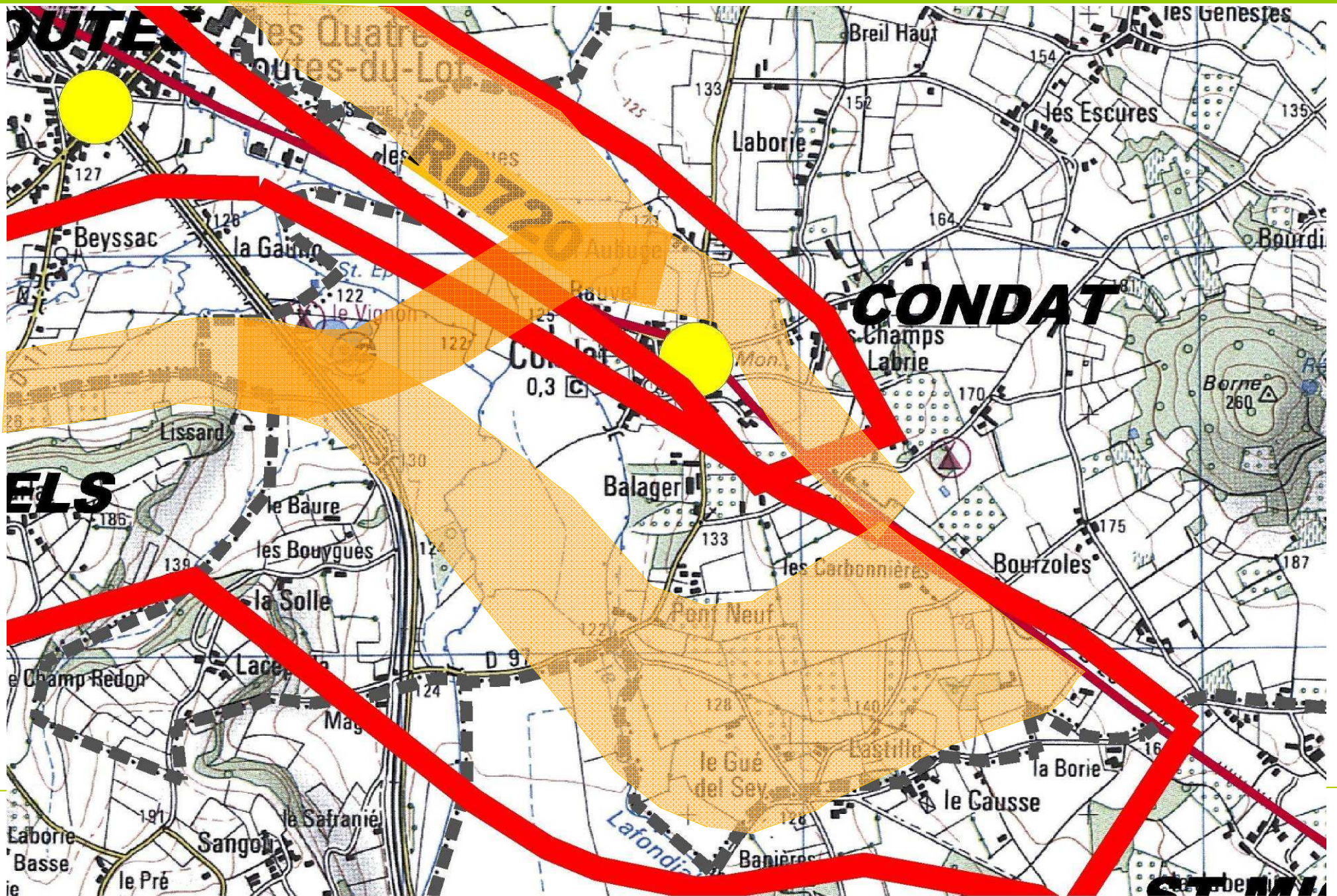
- 5 Tracés avec 5 sous-variantes

- T1, T1a, T1b,
- T2, T2a, T2b,
- T3,
- T4, T4a,
- T5.

- 2 itinéraires existants.



# TRACE T3a



# TRACES PRESENTES LE 18 MARS

- 5 Tracés avec 5 sous-variantes

- T1, T1a, T1b,
- T2, T2a, T2b,
- T3,
- T4, T4a,
- T5.

- 2 itinéraires existants.



